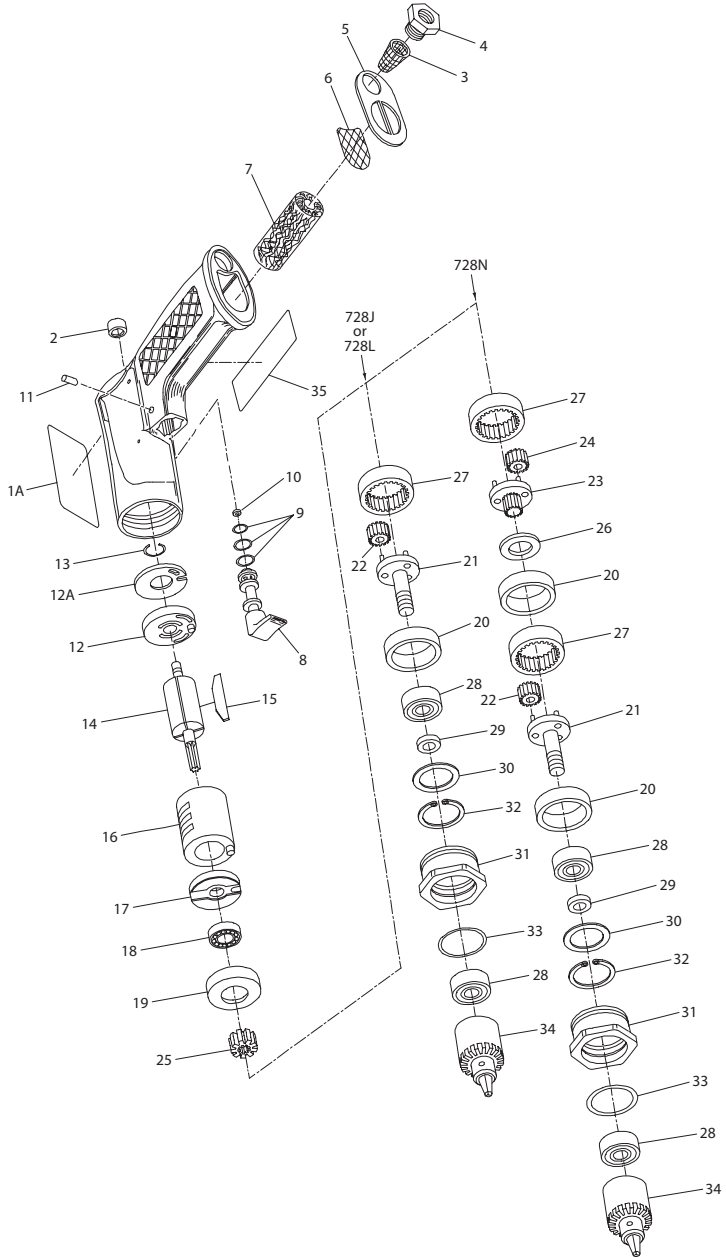


728 Series, Air Drill - Exploded View



(Dwg. TPA628-5)

728 Series, Air Drill - Parts List

Item	Part Description	Part Number	Item	Part Description	Part Number	
	Motor Housing Assembly		24	Gear Head Planet Gear (3 for 728N)	728J-10	
	For 728J and 728L	728J-A40	25	Rotor Pinion (for 728J and 728N)	728J-17	
	For 728N	728N-A40	26	Gear Head Thrust Plate (for 728N)	728N-80	
1	Motor Housing		27	Ring Gear (1 for 728J and 728L; 2 for 728N)	728-406	
	For 728J and 728L	728J-B40	28	Front Spindle Bearing (2)	728-510	
	For 728N	728N-B40	29	Inner Spindle Bearing Spacer	728-111	
1A	Warning Label	WARNING-7-99	30	Outer Spindle Bearing Spacer	728-112	
♦ ♦ 2	Rear Rotor Bearing	728-24	31	Bearing Cage Assembly	728-A107	
♦ ♦ 3	Air Strainer Screen	D92-61	♦ 32	Spindle Bearing Retainer	4E-118	
4	Inlet Bushing	R001-182	♦ 33	Spindle Bearing Snubber	AF120-294	
5	Exhaust Plate	728-123	34	Drill Chuck		
♦ ♦ 6	Exhaust Plate Screen	728-122		For 728JA1 (0 to 3/8" capacity) (standard)	6A-99	
♦ ♦ 7	Exhaust Silencer	728-310		For 728JA1 (0 to 1/4" capacity) (heavy duty)	R00A-99	
♦ 8	Throttle Valve Bushing Assembly	728-A503		For 728LA2 (0 to 3/8" capacity)	6A-99	
♦ 9	Throttle Valve Bushing O-ring (3)	AF120-290		For 728NA3 (0 to 1/2" capacity)	R0K-99	
♦ 10	Throttle Valve Face	R000BR1C-283		For 728J6K or 728L6K (0 to 3/8" capacity) (keyless)	728-99-KC5	
11	Bushing Retaining Pin	5UT-757		For 728N8K (0 to 1/2" capacity) (keyless)	728-99-KC8	
12	Rear End Plate Assembly	728-A12		35	Nameplate	
♦ ♦ 12A	End Plate Gasket	728-739			For 728JA1	728JA1-301
♦ ♦ 3	Rear End Plate Retainer	728-38			For 728J6K	728J6K-301
14	Rotor	728-53	For 728LA2		728LA2-301	
♦ 15	Vane Packet (set of 4 Vanes)	728-42-4	For 728L6K		728L6K-301	
16	Cylinder Assembly	728-A3	For 728NA3		728NA3-301	
17	Front End Plate	728-11	For 728N8K		728N8K-301	
♦ 18	Front Rotor Bearing	R0A2-22	*		Drill Chuck Key	
19	Front Rotor Bearing Support	728-13A			For 6A-99 Chuck	R0J-J253
20	Spacer (1 for 728J and 728L; 2 for 728N)	728-118			For R00A-99 Chuck	R00A-J253
21	Spindle Assembly (includes planet gear shafts)			For 7806-99-8 Chuck	728N-253	
		For 728J		728J-A8	For R0K-99 Chuck	R1T-J253
		For 728L	728L-A8	*	Exhaust Plate Assembly (for piped-away exhaust) (includes crimped-on hose fitting)	D1400-A123
For 728N	728J-A8	*	Dead Handle (for 728N)		728N-A48	
22	Spindle Planet Gear (3)			*	Tune-up Kit (includes illustrated parts: 2, 3, 6, 7, 9 [3], 10, 12A, 13, 15 and 18)	728-TK3
			For 728J		728J-10	
		For 728N	728J-10			
23	Gear Head (includes planet gear shafts) (for 728N)	728N-A216				

* Indicates not illustrated.

♦ To keep downtime to a minimum, it is desirable to have on hand certain repair parts. We recommend that you stock one (pair or set) of each part indicated by a bullet (♦) for every four tools in service.

♦ Indicates Tune-up Kit part.

Parts and Maintenance

When tool life has expired, it is recommended that the tool be disassembled, degreased and parts separated by material for proper recycling.

Tool repair and maintenance should only be carried out by an authorized Service Center.

Refer all communications to the nearest **Ingersoll Rand** office or distributor.

Related Documentation

Manuals can be downloaded from ingersollrand.com

For additional information, refer to:

Product Safety Information Manual 04580353

Product Information Manual 03527256

Maintenance Information Manual 16606022

