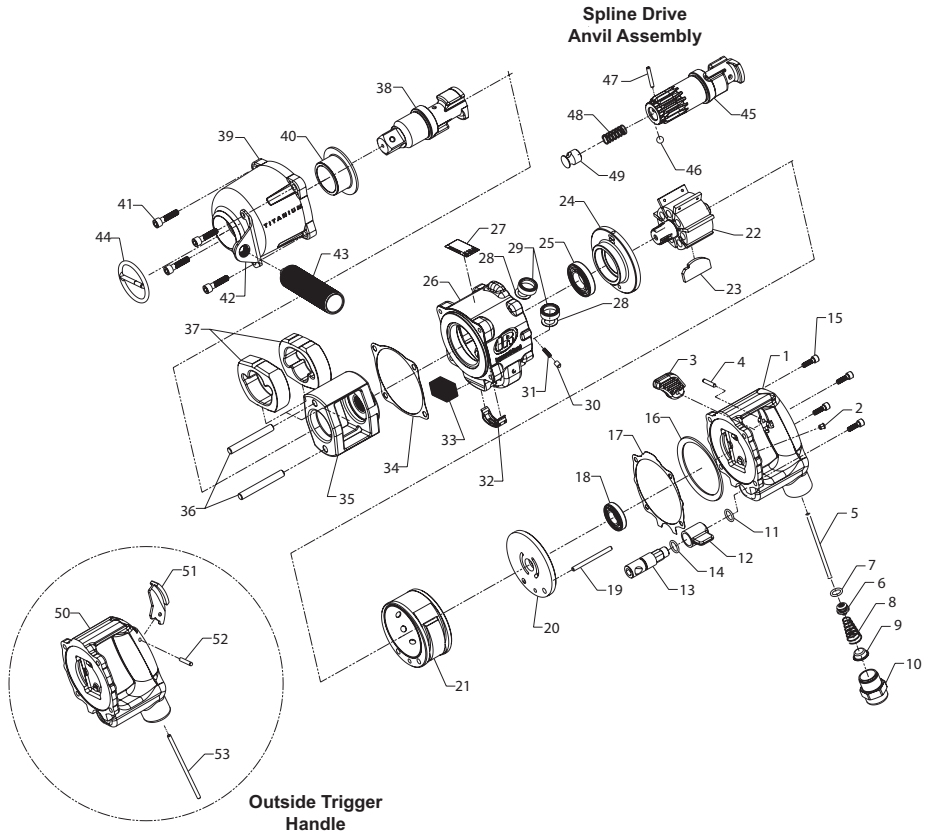


3940 and 3942 Series Air Impact Wrench - Exploded View



(Dwg. 80166754)

3940 and 3942 Series, Air Impact Wrench - Parts List

Item	Part Description	Part Number	Item	Part Description	Part Number
1	Inside Trigger Handle Assembly	3940-A92	† • 17	Handle Gasket	3940-283
2	Grease Fitting	130SR-188	† 18	Rear Rotor Bearing	508-97
3	Trigger	3940-93	19	Cylinder Dowel	3934-98
4	Trigger Pin	280-265			
5	Throttle Valve Plunger	3940-302			
6	Throttle Valve Assembly	2934-A50	20	Rear End Plate	2934-12
† • 7	Throttle Valve Seal	2934-159			
† 8	Throttle Valve Spring	834-51-5	21	Cylinder	2934-3
† • 9	Air Strainer Screen	434-61			
10	Straight Inlet	845-565	22	Rotor	3934-53
† • 11	Reverse Valve Seal	R00BR-210			
12	Reverse Lever	3940-75	22	Rotor	3940-53
13	Reverse Valve				
		for 3940A1Ti, 3940A2Ti, 3940B1Ti, 3940B2Ti, and 3940B2TiEX	3934-329		
	for 3942A2Ti, 3942B1Ti, 3942B2Ti, and 3942B2TiEX	3940-329			
† • 14	Reverse Valve Bushing Seal	85H-167			
15	Handle Cap Screw (4)	3940-638			
16	Motor Clamp Washer	2934-207			

Item	Part Description	Part Number	Item	Part Description	Part Number
† • 23	Vane Packet (Set of 7 vanes)		39	Hammer Case Assembly	
	for 3940A1Ti, 3940A2Ti, 3940B1Ti, 3940B2Ti, and 3940B2TiEX	2934-42-7		for 3940A1Ti, 3940A2Ti, 3940B1Ti, 3940B2Ti, 3942A2Ti, 3942B1Ti, and 3942B2Ti	3940-D727
	for 3942A2Ti, 3942B1Ti, 3942B2Ti, and 3942B2TiEX	2940-42-7		for 3940B2TiEX and 3942B2TiEX	3940EX-D727
24	Front End Plate	3940-11	40	Hammer Case Bushing	
† 25	Front Rotor Bearing	810-97		for 3940A1Ti, 3940A2Ti, 3940B1Ti, 3940B2Ti, 3942A2Ti, 3942B1Ti, and 3942B2Ti	2934-641
26	Motor Housing Assembly			for 3940B2TiEX and 3942B2TiEX	2934-641SP
	for 3940A1Ti, 3940A2Ti, 3940B1Ti, 3940B2Ti, and 3940B2TiEX	3934-A40	41	Hammer Case Cap Screw (4)	3940-105
	for 3942A2Ti, 3942B1Ti, 3942B2Ti, and 3942B2TiEX	3940-A40	42	Dead Handle Bracket	3940-364
27	Warning Label for Impacttools	WARNING-2-99	43	Dead Handle	3940-48
† 28	Air Port Gasket Retainer (2)	2940-200	44	Socket Retainer	RR100155
† • 29	Air Port Gasket (2)	R44H-210A	45	Spline Drive Anvil Assembly	2940-A526
*	ATEX Spec Label	ATEX-301A	† 46	Socket Retaining Ball	D04-280
† 30	Reverse Lock Plunger	4U-663B	† 47	Plunger Retaining Pin	845-128
† 31	Reverse Lock Plunger Spring	4U-664-10	† 48	Retaining Plunger Spring	2940-231-5
32	Exhaust Deflector		49	Retaining Ball Plunger	845-230
	for 3940A1Ti, 3940A2Ti, 3940B1Ti, 3940B2Ti, and 3940B2TiEX	3934-123	50	Outside Trigger Handle Assembly (includes 2, 6, 7, 8, 9, 10, 11, 51, 52, 53)	3940-A1
	for 3942A2Ti, 3942B1Ti, 3942B2Ti, and 3942B2TiEX	3940-123	51	Trigger	844-78
† 33	Exhaust Silencer		52	Trigger Pin	280-265
	for 3940A1Ti, 3940A2Ti, 3940B1Ti, 3940B2Ti, and 3940B2TiEX	3934P-311	53	Throttle Valve Plunger	3940A-302
	for 3942A2Ti, 3942B1Ti, 3942B2Ti, and 3942B2TiEX	3940P-311	*	Grease Gun	R000A2-228
† 34	Hammer Case Gasket	3940-36	*	Tune-up Kit (includes 7, 8, 9, 11, 14, 17, 18, 23, 25, 28[2], 29[2], 30, 31, 33, 34, 46, 47, 48)	
35	Hammer Frame Assembly	2940-A703		for 3940A1Ti, 3940A2Ti, 3940B1Ti, 3940B2Ti and 3940B2TiEX	3940-TK1
36	Hammer Pin (2)	2940-704		for 3942A2Ti, 3942B1Ti, 3942B2Ti and 3942B2TiEX	3942-TK1
37	Hammer (2)	2940-724			
38	1" Square Drive Anvil				
	Standard Length	2940-726			
	6" Extended Length	2940-314-6			

* Indicates not illustrated.

† Indicates Tune-up Kit Part.

• Indicates common-wear parts. Maintain stock to reduce downtime.

Parts and Maintenance

When tool life has expired, it is recommended that the tool be disassembled, degreased and parts separated by material for proper recycling.

Tool repair and maintenance should only be carried out by an authorized Service Center.

Refer all communications to the nearest **Ingersoll Rand** office or distributor.

Related Documentation

Manuals can be downloaded from ingersollrand.com

For additional information, refer to:

Product Safety Information Manual 04580916 and 47559151001 (ATEX).

Product Information Manual 10569382.

Product Maintenance Manual 10569408.

Declaration of Conformity 47616441001.